

USERS' PERSPECTIVE OF THE SOMS

John Murray, Director, Marine, ICS
5th Co-operation Forum
September 2012



International Chamber of Shipping

- ICS is an International Trade Association representing all sectors and trades in the maritime industry
- All technical, legal and policy issues that may have an impact on international shipping
- Founded in 1921



Importance of the SOMS

“From an economic and strategic perspective, the Strait of Malacca is one of the most important shipping lanes in the world.” Wikipedia, 2012



Importance of the SOMS for the User

- For the shipping industry the continued importance of the effective maintenance and management of a safe, efficient and direct route navigable by ships cannot be stressed enough
- There is a continual increase in the number of and size of ships and these will inevitably increase the use of this important trade route



What problems do we encounter?

- Collisions
- Groundings
- Near Misses
- Congested areas
- Traffic Density
- Adverse weather
- Tides
- Multitude of activities to complete
- Information/Activity overload
- Prolonged transit of a 'high risk' area
- Many different vessel types
- Varying vessel speeds

Can we address these together?



What do we do wrong?

- Safe speed?
- Situational awareness?
- Rely too much on pilots and local knowledge?
- Poor anticipation of traffic situations?
- Passage plan without taking into account delays for pilots or anchorage areas?
- Do ships have complete awareness of manoeuvring problems in areas of high traffic density (anchoring and pilot boarding areas)?

What does the user want?

- Assess if survey findings are accurate
- Continue to ensure that route is safe for projected traffic increase
- Continued dialogue with Littoral States
- Joint projects to ensure all stakeholders are involved in developing solutions that are mutually acceptable and manageable
- Reduction in incidents
- Reduction in near misses
- Consistency

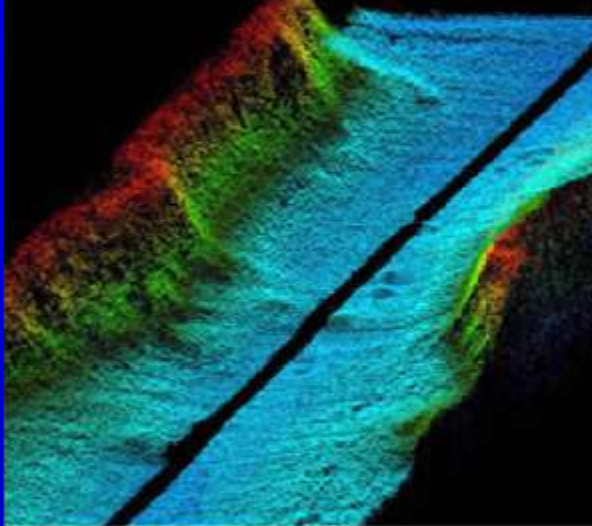


What has been done?

- Night Signal for Crossing vessels
- IHO S-100 test bed
- More accident reports sent to ICS
- Revised survey results

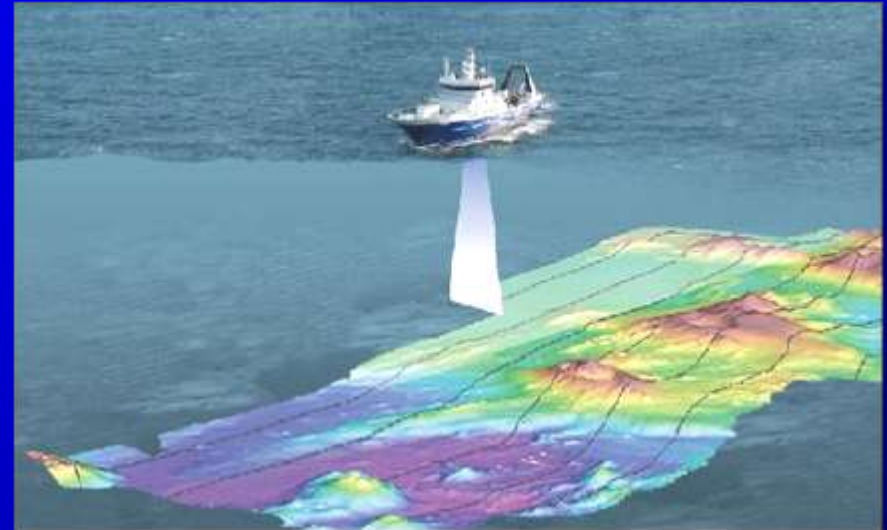


What more can be done?

- Wider?
 - Straighter?
 - Deeper?
 - Do we need this?
- 
- We first need to assess and validate the identified issues
 - Speed, pilot boarding areas, situational awareness...
 - Then consider if longer term changes are required

What does the user need?

- Accurate Chart data
- Reliable information
- More effective use of modern equipment



Nice to haves:

- Real time data
- Information overlays

What can we do now together?

- More trials?
- Unique opportunity for the area to lead on e-navigation development and implementation
- Possible Best Practice Guide developed with the shipping industry:

*Best Practice Guidelines for Ships
Navigating and Operating in the Straits of
Malacca and Singapore?*



Thank you

